

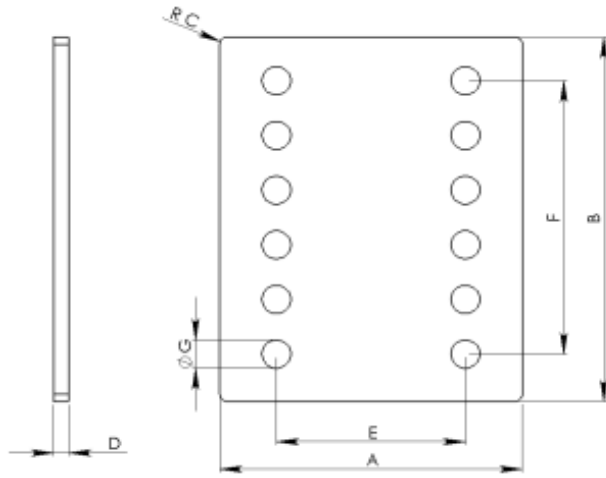


**Coining** Technologies  
INCORPORATED

## Open Tool Catalog

Phone +1.973.253.0500 • Fax +1.973.253.9611 • e-mail [sales@coining.com](mailto:sales@coining.com)  
[www.coining.com](http://www.coining.com)

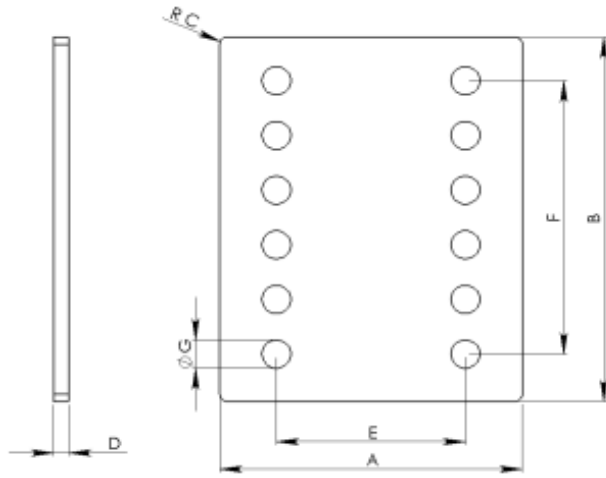
Rev. A-113007



**400 Kuller Road**  
**Clifton, NJ 07011**  
**Phone: 973.253.0500**  
**Fax: 973.253.9611**  
**Web: www.coining.com**  
**E-mail: sales@coining.com**

## RB • Coined Relay Bases

|            | A             | B              | C      | D         | E               | F                | G              | H    |
|------------|---------------|----------------|--------|-----------|-----------------|------------------|----------------|------|
| CTI Part#  | Overall Width | Overall Length | Radius | Thickness | Hole Grid Width | Hole Grid Length | Hole Diameter  | Moat |
| RB-550-01B | 0.100         | 0.100          | 0.175  | 0.115     | 0.430           | 0.43             | 0.144/0.175    | NO   |
| RB-215-10B | 0.369         | 0.773          | 0.035  | 0.080     | 0.200           | 0.6              | 0.096          | YES  |
| RB-215-01B | 0.371         | 0.771          | 0.030  | 0.060     | 0.150           | 0.45             | 0.1            | YES  |
| RB-313-02B | 0.371         | 0.771          | 0.034  | 0.060     | 0.200           | 0.6              | 0.094          | YES  |
| RB-357-01B | 0.374         | 0.774          | 0.015  | 0.060     | 0.200           | 0.6              | 0.096          | NO   |
| RB-105-01B | 0.383         | 0.783          | 0.035  | 0.060     | 0.200           | 0.6              | .128/.106      | YES  |
| RB-250-01A | 0.468         | 1.026          | 0.038  | 0.110     | 0.200           | 0.6              | 0.125          | YES  |
| RB-007-01B | 0.475         | 0.975          | 0.015  | 0.093     | ODD             | ODD              | .100/.161/.191 | YES  |
| RB-007-02B | 0.475         | 0.975          | 0.015  | 0.080     | 0.630           | 0                | .150/.180      | YES  |
| RB-007-03B | 0.475         | 0.975          | 0.015  | 0.093     | 0.630           | 0                | .150/.180/.085 | YES  |
| RB-007-04B | 0.475         | 0.975          | 0.015  | 0.093     | ODD             | ODD              | .161/.191      | YES  |
| RB-007-07B | 0.475         | 0.975          | 0.015  | 0.093     | 0.200           | 0.6              | 0.161          | YES  |
| RB-348-01A | 0.485         | 0.900          | 0.065  | 0.060     | 0.260           | 0.7              | 0.07           | NO   |
| RB-071-01B | 0.773         | 0.773          | 0.030  | 0.078     | 0.450           | 0.45             | 0.1            | YES  |
| RB-071-02B | 0.773         | 0.773          | 0.030  | 0.080     | 0.400           | 0.46             | 0.14           | YES  |
| RB-004     | 0.967         | 0.967          | 0.030  | 0.093     | 0.600           | 0.6              | 0.161          | YES  |
| RB-203     | 0.967         | 0.967          | 0.030  | 0.093     | ODD             | ODD              | .141/.161/.187 | YES  |
| RB-008-02B | 0.975         | 0.975          | 0.015  | 0.080     | 0.600           | 0.63             | .150/.180      | YES  |
| RB-008-03B | 0.975         | 0.975          | 0.015  | 0.080     | 0.600           | 0.63             | .140/.150/.180 | YES  |
| RB-006-01B | 0.997         | 0.997          | 0.030  | 0.088     | 0.600           | 1                | 0.161          | YES  |
| RB-357-11B | 0.142         | 0.498          | 0.033  | 0.070     | 0.000           | 0                | 0.094          | NO   |
| RB-550-01B | 0.155         | 0.155          | N/A    | 0.110     | N/A             | N/A              | 0.125          | NO   |
| RB-326-01B | 0.212         | 0.482          | 0.015  | 0.045     | 0.100           | 0.3              | 0.07           | NO   |
| RB-205-08B | 0.313         | 1.684          | N/A    | 0.080     | 0.170           | 1.225            | 0.093          | NO   |
| RB-205-02B | 0.321         | 1.334          | 0.321  | 0.080     | 0.170           | 0.875            | 0.093          | NO   |
| RB-205-03B | 0.322         | 0.634          | 0.321  | 0.080     | 0.170           | 0.175            | 0.093          | NO   |
| RB-202-02B | 0.322         | 0.748          | 0.322  | 0.080     | 0.125           | 0.625            | 0.1            | YES  |
| RB-202-01B | 0.322         | 0.750          | N/A    | 0.080     | 1.630           | 0.536            | 0.1            | NO   |
| RB-205-01B | 0.322         | 0.984          | 0.322  | 0.080     | 0.170           | 0.525            | 0.093          | NO   |
| RB-301-01B | 0.336         | 0.745          | N/A    | 0.080     | 1.860           | 0.486            | 0.161/0.625    | NO   |



400 Kuller Road  
 Clifton, NJ 07011  
 Phone: 973.253.0500  
 Fax: 973.253.9611  
 Web: www.coining.com  
 E-mail: sales@coining.com

## RB • Coined Relay Bases

|            | A             | B              | C      | D         | E               | F                | G             | H    |
|------------|---------------|----------------|--------|-----------|-----------------|------------------|---------------|------|
| CTI Part#  | Overall Width | Overall Length | Radius | Thickness | Hole Grid Width | Hole Grid Length | Hole Diameter | Moat |
| RB-215-02B | 0.360         | 0.764          | 0.040  | 0.080     | 0.200           | 0.6              | 0.126         | YES  |
| RB-313-03B | 0.368         | 0.762          | 0.043  | 0.060     | 0.200           | 0.6              | 0.093         | YES  |
| RB-215-02B | 0.370         | 0.774          | 0.033  | 0.071     | 0.200           | 0.6              | 0.094         | YES  |
| RB-357-10B | 0.370         | 0.774          | 0.033  | 0.071     | 0.200           | 0.6              | 0.094/0.062   | YES  |
| RB-215-01B | 0.371         | 0.771          | 0.030  | 0.063     | 0.150           | 0.45             | 0.1           | NO   |
| RB-001-01G | 0.394         | 1.614          | 0.059  | 0.100     | 0.000           | 0                | 0.236         | NO   |
| RB-925-01B | 0.441         | 0.925          | 0.441  | 0.078     | 0.264           | 0                | 0.165         | NO   |
| RB-101-01G | 0.473         | 0.473          | 0.015  | 0.079     | 0.236           | 0                | 0.118         | NO   |
| RB-007-05B | 0.474         | 0.977          | 0.015  | 0.080     | 0.200           | 0.6              | 0.161         | YES  |
| RB-264-01B | 0.476         | 0.967          | 0.017  | 0.080     | 0.200           | 0.6              | 0.161         | YES  |
| RB-348-01A | 0.485         | 0.900          | 0.065  | 0.059     | 0.260           | 0.7              | 0.069         | NO   |
| RB-979-01B | 0.495         | 2.093          |        | 0.117     | 0.173           | 1.063            | 0.093         | NO   |
| RB-009-01B | 0.498         | 1.213          | 0.062  | 0.114     | 0.112           | 0.432            | 0.081         | NO   |
| RB-010-01B | 0.498         | 1.545          | 0.062  | 0.114     | 0.112           | 0.756            | 0.081         | NO   |
| RB-111-01B | 0.610         | 2.643          | 0.062  | 0.118     | 0.224           | 1.739            | 0.081         | NO   |
| RB-778-02B | 0.778         | 0.778          | 0.015  | 0.062     | 0.400           | 0.46             | 0.14          | NO   |
| RB-203-02B | 0.967         | 0.967          | 0.030  | 0.093     | 0.600           | 0.63             | 0.186         | YES  |
| RB-004-01B | 0.968         | 0.967          | 0.030  | 0.093     | 0.600           | 0.6              | 0.16          | YES  |
| RB-004-02B | 0.968         | 0.968          | 0.030  | 0.093     | 0.600           | 0.63             | 0.09          | YES  |
| RB-008-01B | 0.975         | 0.975          | 0.019  | 0.079     | 0.897           | 0                | 0.075         | YES  |
| RB-008-04B | 0.978         | 0.978          | N/A    | 0.082     | 0.600           | 0.6              |               | NO   |
| RB-008-01B | 0.999         | 1.429          | 0.030  | 0.090     | 1.000           | 1                | 0.161         | YES  |
| RB-428-01B | 1.010         | 1.270          | 0.020  | 0.080     | 0.600           | 0.6              | 0.16          | NO   |
| RB-428-02B | 1.010         | 1.270          | 0.020  | 0.080     | 0.600           | 0.6              | 0.16          | NO   |
| RB-668-01B | 1.010         | 1.270          | 0.020  | 0.080     | 0.600           | 0.6              | 0.16          | NO   |
| RB-016-01B | 1.016         | 1.442          | N/A    | 0.079     | 0.800           | 0                | 0.075         | YES  |
| RB-002-01B | 1.030         | 1.118          | 0.143  | 0.090     | 0.630           | 0.734            | 0.161/0.0135  | YES  |
| RB-171     | 1.410         | 1.410          | 0.030  | 0.125     | 0.450           | 0.53             | .156/.250     | NO   |